

5 幸福実感

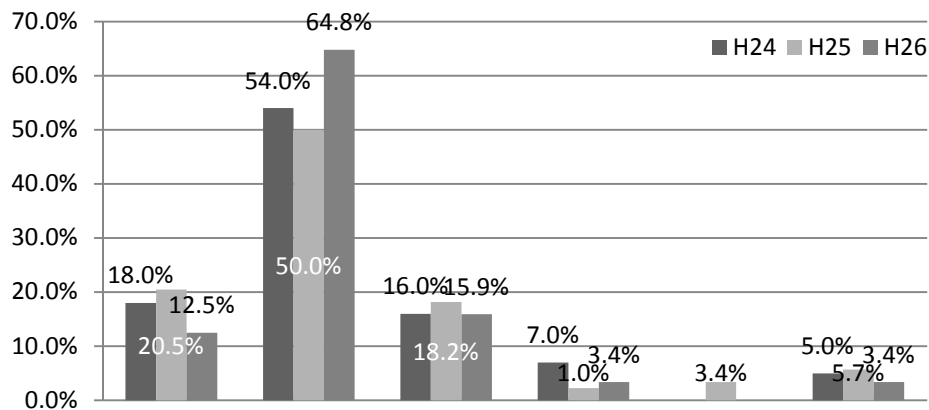
(1) 3年間の集計

	とても幸せだと思う			どちらかというと幸せだと思う			どちらとも言えない		
	H24	H25	H26	H24	H25	H26	H24	H25	H26
市全体	17.4%	19.1%	16.7%	56.2%	52.3%	56.6%	16.7%	16.6%	15.8%
北区	18.0%	20.5%	12.5%	54.0%	50.0%	64.8%	16.0%	18.2%	15.9%
上京区	21.4%	17.2%	20.3%	54.3%	57.8%	53.1%	14.3%	15.6%	12.5%
左京区	17.1%	18.9%	25.9%	56.6%	56.6%	52.6%	17.8%	18.9%	12.1%
中京区	20.7%	14.1%	14.1%	50.0%	51.1%	57.7%	20.7%	25.0%	17.9%
東山区	20.6%	12.5%	6.3%	50.0%	50.0%	68.8%	17.6%	28.1%	21.9%
山科区	18.4%	16.4%	20.7%	50.5%	64.5%	58.6%	21.4%	11.8%	14.9%
下京区	11.1%	25.9%	17.2%	48.9%	53.4%	58.6%	26.7%	6.9%	15.5%
南区	15.8%	16.2%	17.3%	59.2%	63.5%	55.6%	13.2%	17.6%	14.8%
右京区	15.7%	13.1%	14.0%	61.6%	52.4%	59.2%	12.6%	21.4%	15.3%
西京区	19.2%	16.7%	15.3%	60.3%	65.8%	60.6%	11.6%	8.8%	10.9%
伏見区	15.8%	19.3%	15.8%	57.5%	51.8%	50.5%	19.0%	16.2%	23.0%

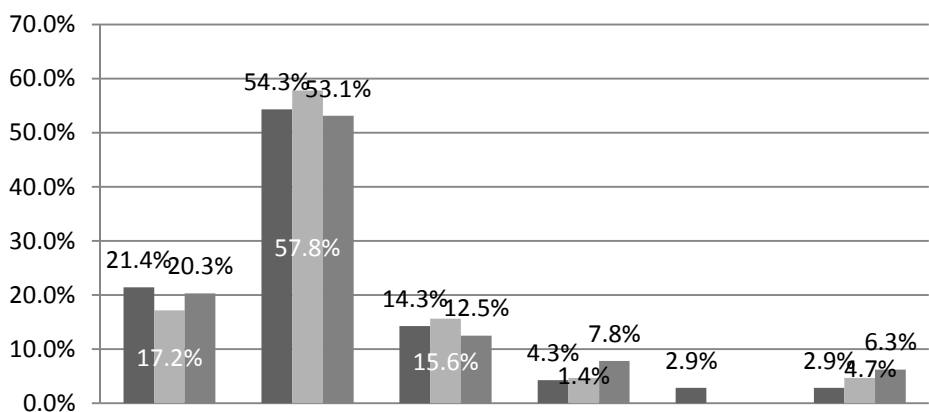
	どちらかというと幸せではないと思う			不幸せだと思う			無回答		
	H24	H25	H26	H24	H25	H26	H24	H25	H26
市全体	3.9%	4.7%	3.3%	1.5%	0.6%	1.2%	4.3%	6.7%	6.3%
北区	7.0%	2.3%	3.4%	0.0%	3.4%	0.0%	5.0%	5.7%	3.4%
上京区	4.3%	4.7%	7.8%	2.9%	0.0%	0.0%	2.9%	4.7%	6.3%
左京区	3.1%	2.8%	4.3%	0.8%	0.0%	1.7%	4.7%	2.8%	3.4%
中京区	3.7%	3.3%	2.6%	0.0%	4.3%	0.0%	4.9%	2.2%	7.7%
東山区	5.9%	3.1%	0.0%	0.0%	3.1%	0.0%	5.9%	3.1%	3.1%
山科区	3.9%	3.6%	1.1%	1.9%	0.0%	0.0%	3.9%	3.6%	4.6%
下京区	4.4%	6.9%	0.0%	0.0%	1.7%	1.7%	8.9%	5.2%	6.9%
南区	2.6%	0.0%	3.7%	1.3%	1.4%	1.2%	7.9%	1.4%	7.4%
右京区	6.3%	4.8%	5.1%	1.3%	1.4%	1.9%	2.5%	6.9%	4.5%
西京区	3.4%	2.6%	4.4%	1.4%	1.8%	0.7%	4.1%	4.4%	8.0%
伏見区	1.4%	6.1%	2.0%	3.2%	1.5%	2.6%	3.2%	5.1%	6.1%

(2) 肯定的回答の変化(H24～H26の比較)

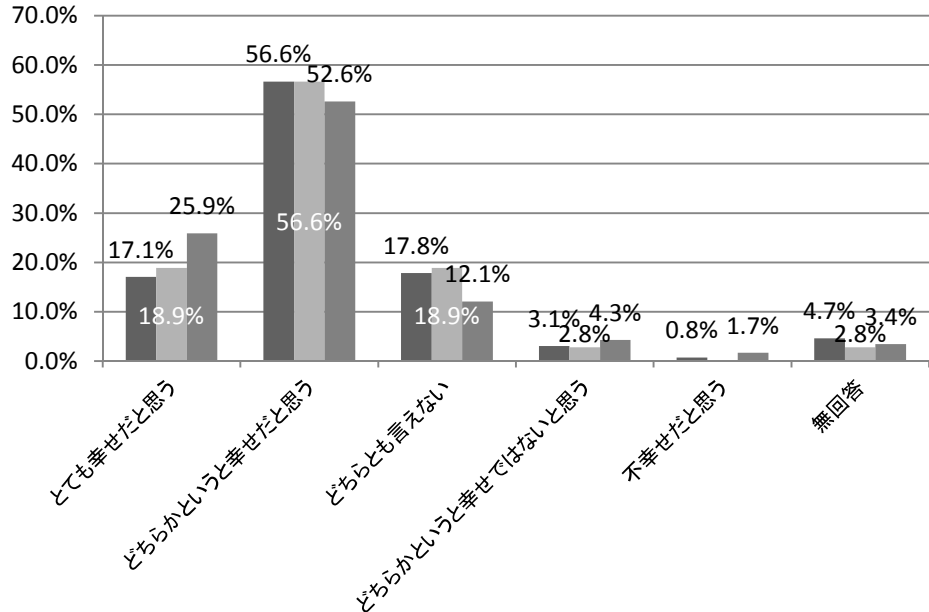
・北区



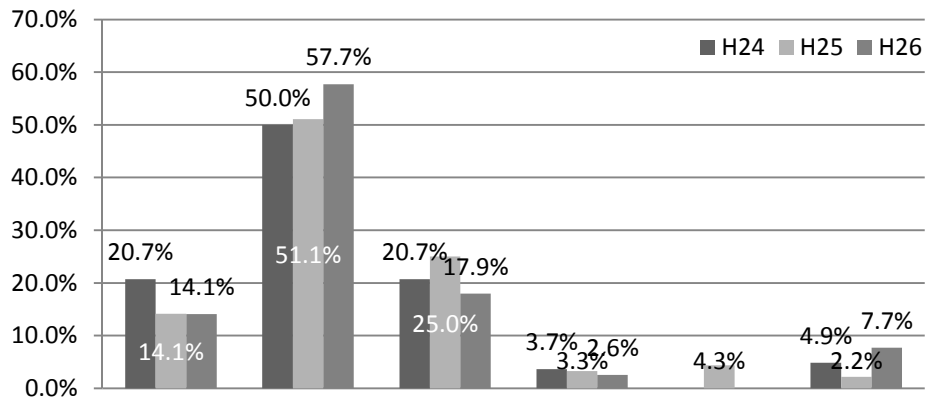
・上京区



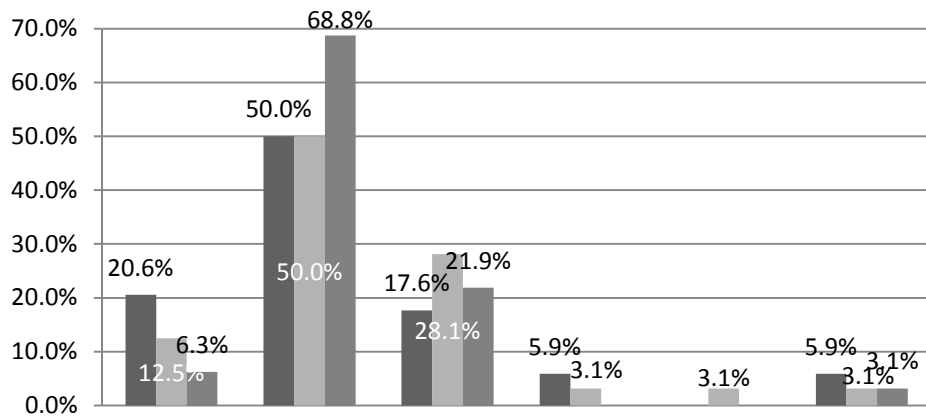
・左京区



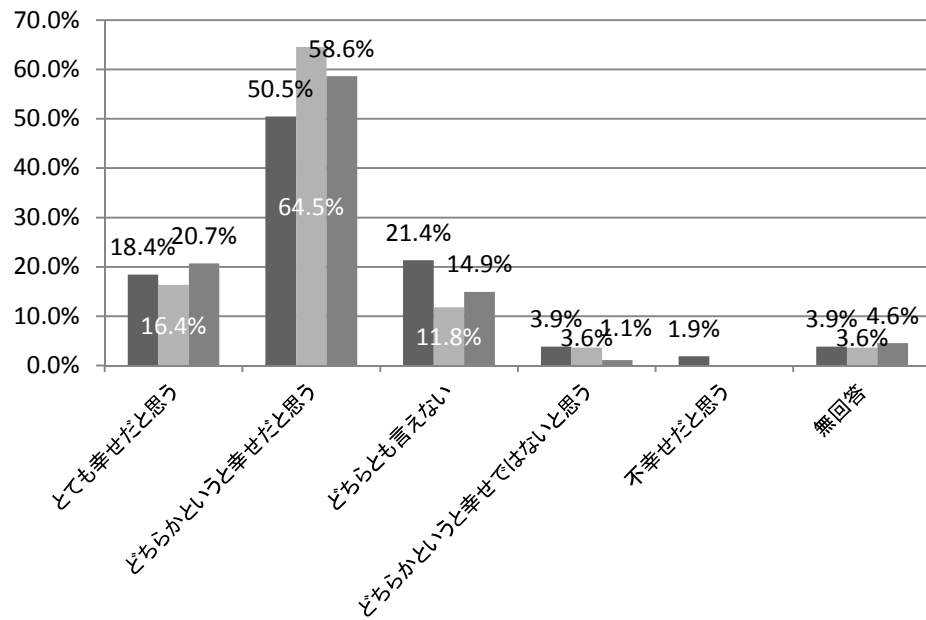
・中京区



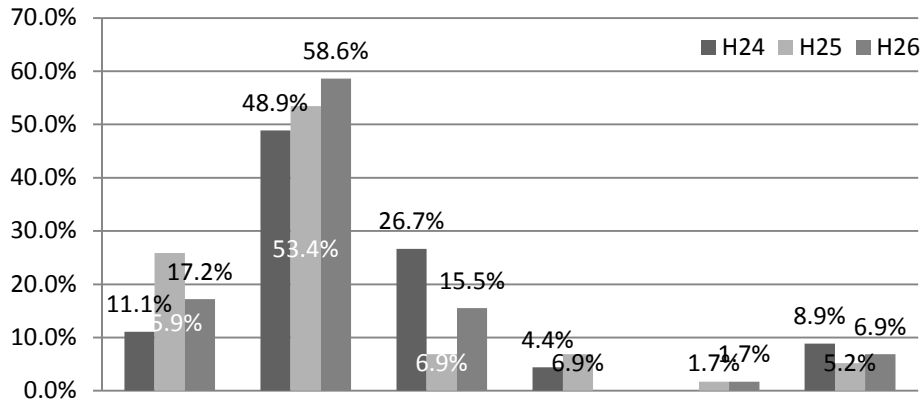
・東山区



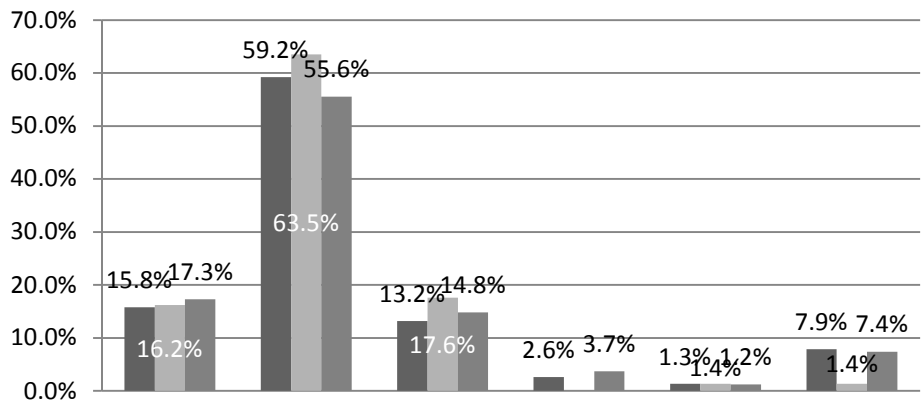
・山科区



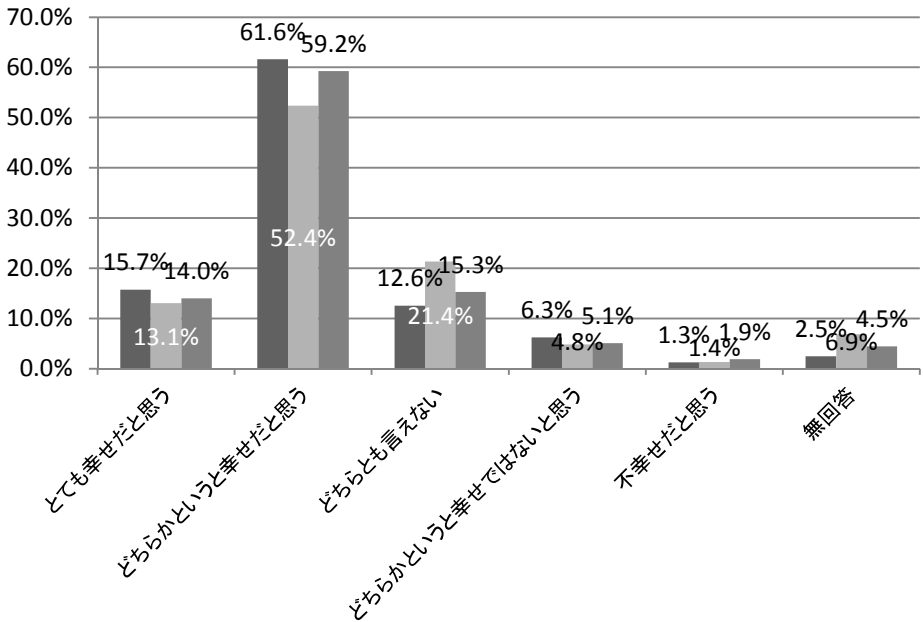
・下京区



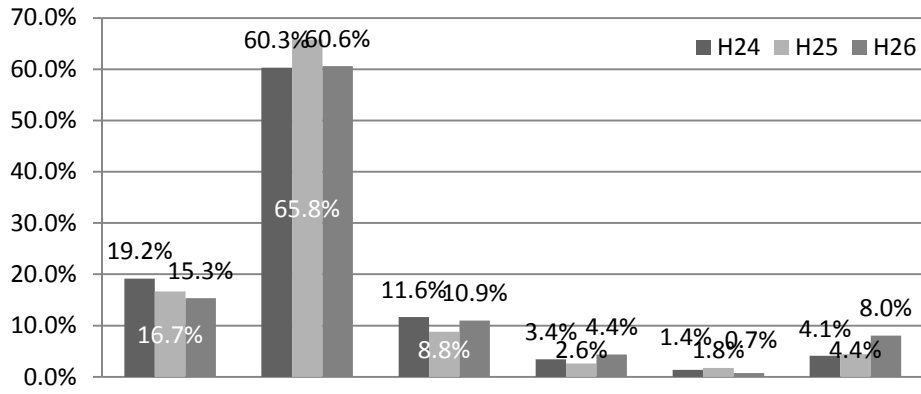
・南区



・右京区



・西京区



・伏見区

