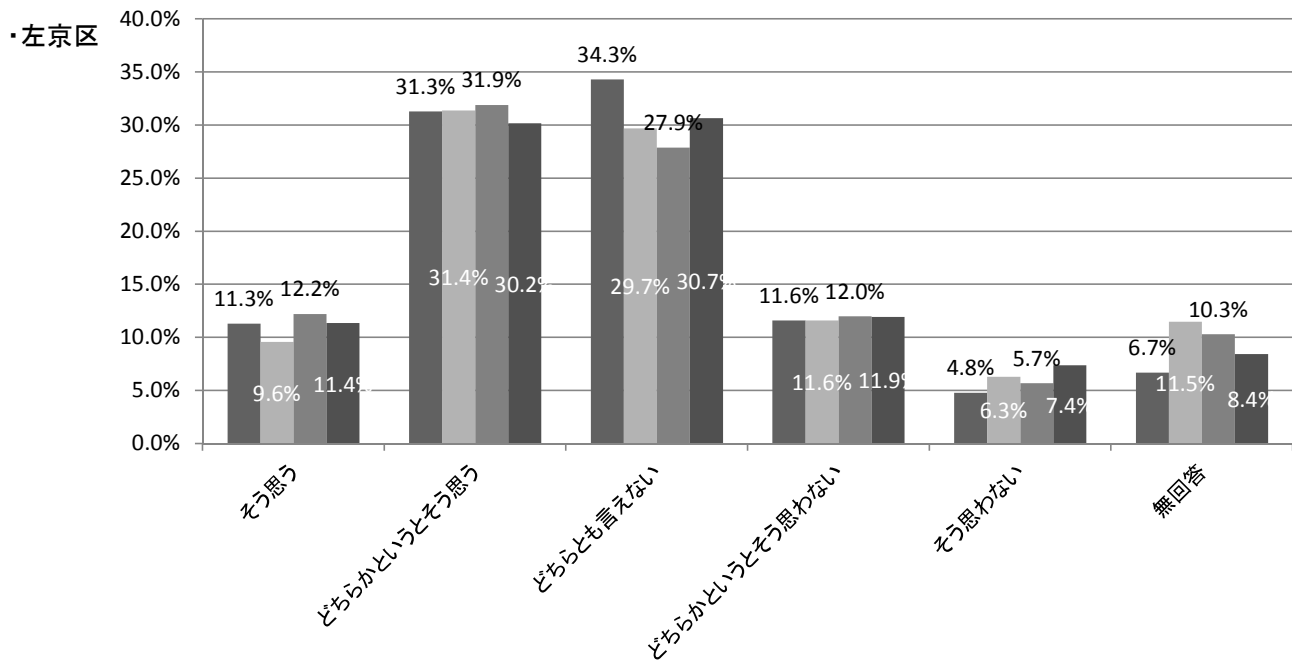
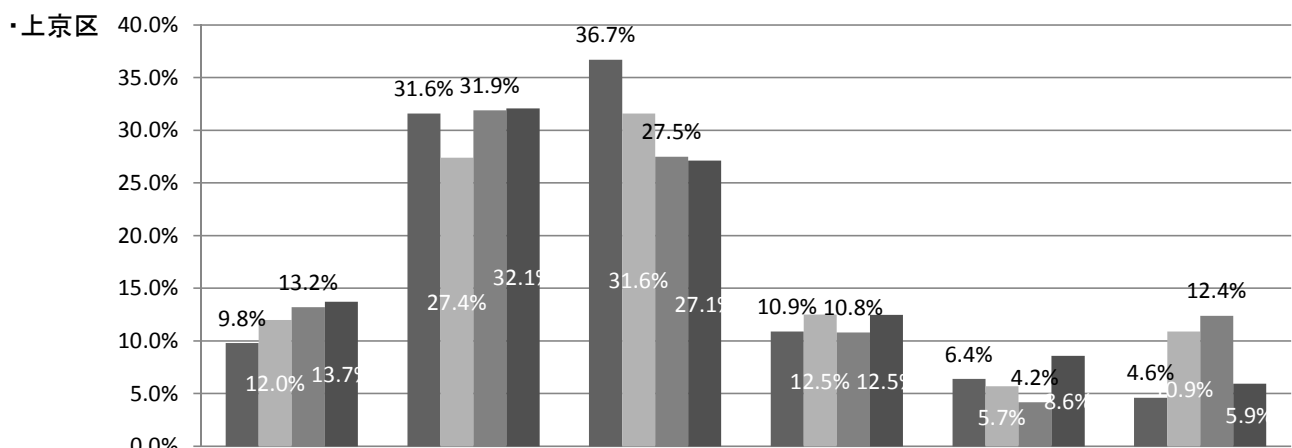
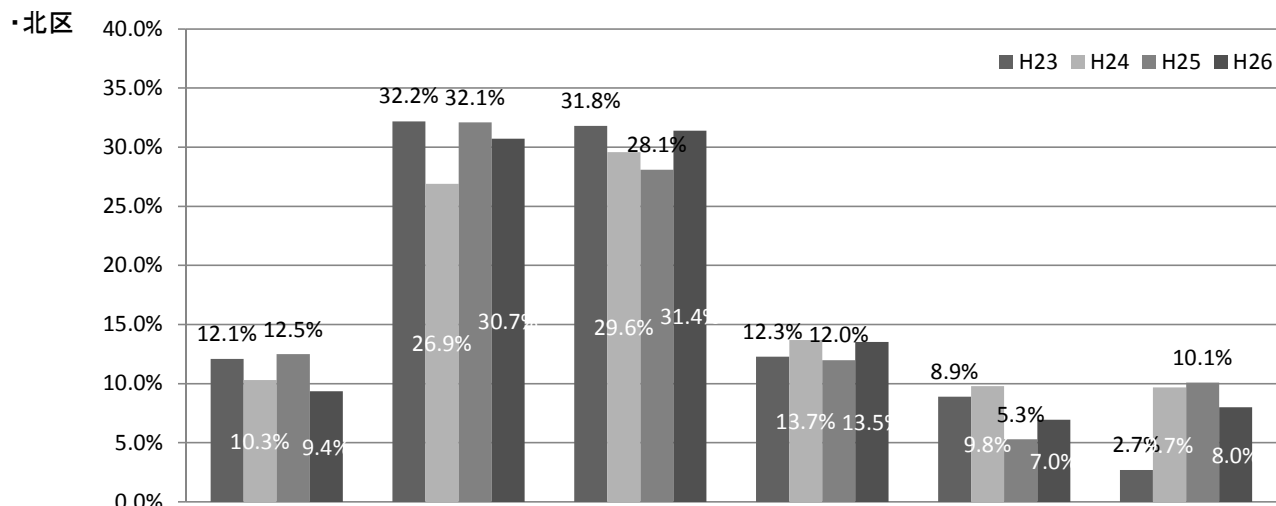


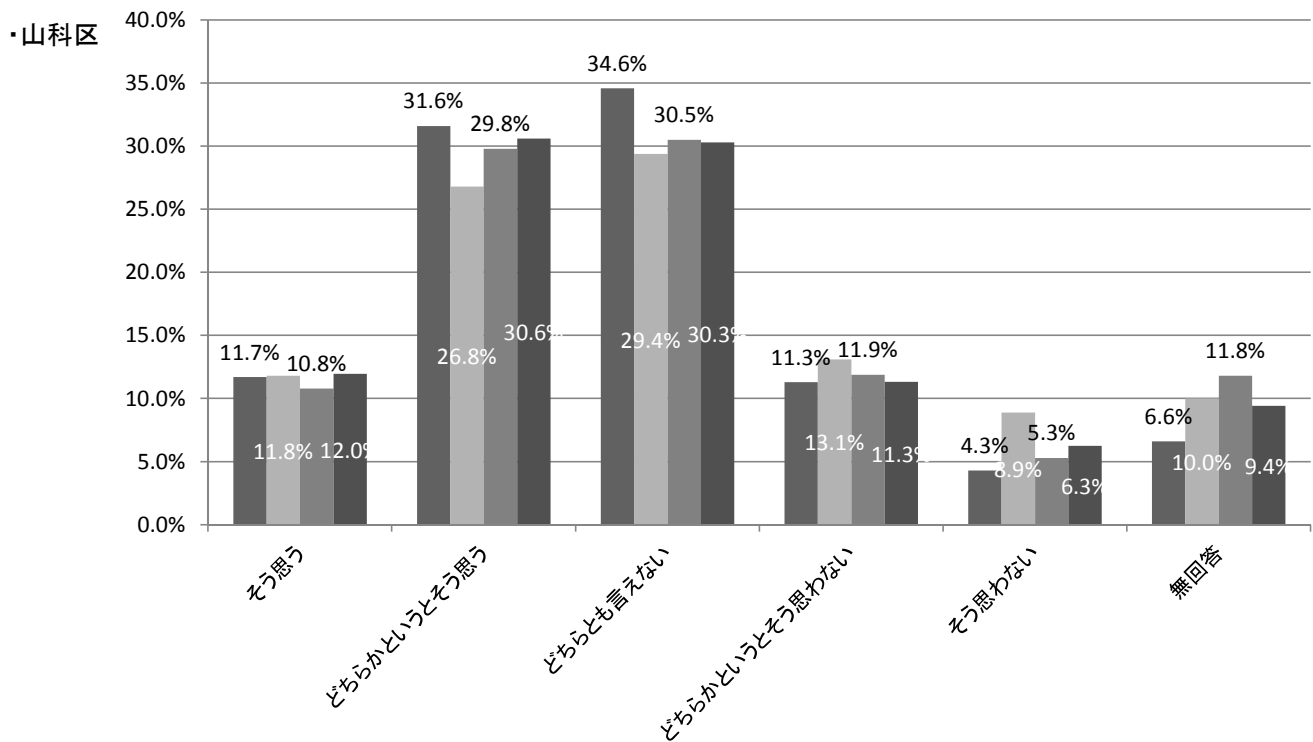
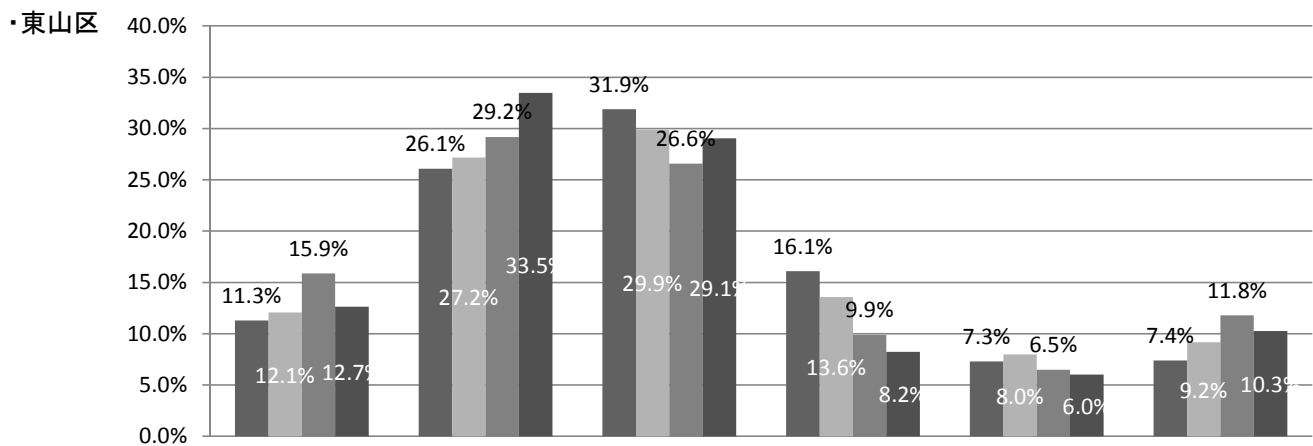
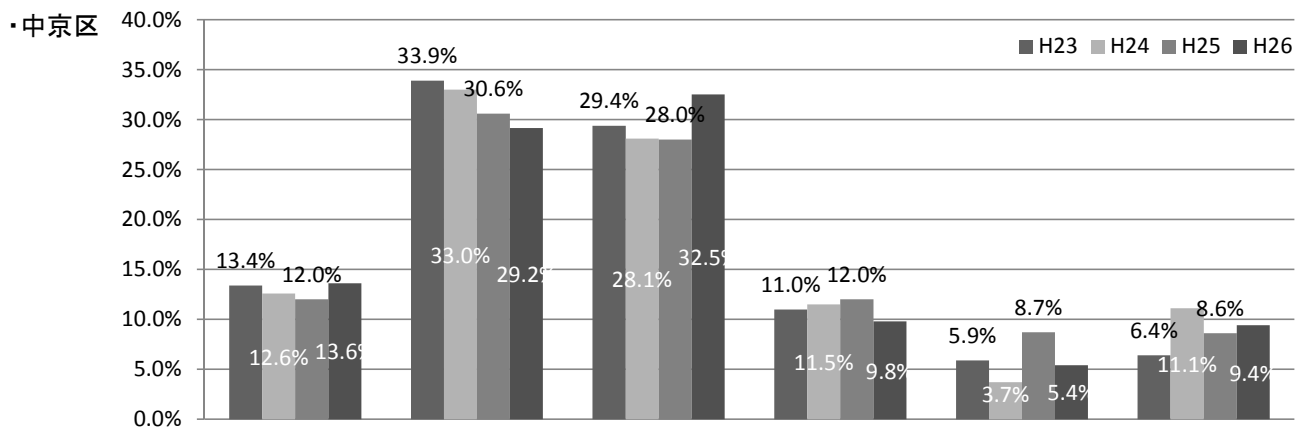
1 生活実感  
(1) 4年間の集計

	そう思う				どちらかというと思う				どちらとも言えない			
	H23	H24	H25	H26	H23	H24	H25	H26	H23	H24	H25	H26
市全体	11.2%	10.6%	11.9%	11.8%	30.5%	28.5%	30.0%	30.7%	33.1%	30.1%	29.3%	30.0%
北区	12.1%	10.3%	12.5%	9.4%	32.2%	26.9%	32.1%	30.7%	31.8%	29.6%	28.1%	31.4%
上京区	9.8%	12.0%	13.2%	13.7%	31.6%	27.4%	31.9%	32.1%	36.7%	31.6%	27.5%	27.1%
左京区	11.3%	9.6%	12.2%	11.4%	31.3%	31.4%	31.9%	30.2%	34.3%	29.7%	27.9%	30.7%
中京区	13.4%	12.6%	12.0%	13.6%	33.9%	33.0%	30.6%	29.2%	29.4%	28.1%	28.0%	32.5%
東山区	11.3%	12.1%	15.9%	12.7%	26.1%	27.2%	29.2%	33.5%	31.9%	29.9%	26.6%	29.1%
山科区	11.7%	11.8%	10.8%	12.0%	31.6%	26.8%	29.8%	30.6%	34.6%	29.4%	30.5%	30.3%
下京区	12.6%	10.4%	14.2%	12.0%	32.0%	28.4%	33.3%	31.2%	32.2%	28.9%	26.9%	28.9%
南区	11.9%	12.7%	10.9%	12.8%	28.4%	31.6%	26.7%	34.1%	32.6%	30.2%	30.1%	27.6%
右京区	9.8%	9.2%	10.1%	11.1%	29.2%	29.2%	31.4%	31.8%	35.5%	31.3%	33.2%	28.3%
西京区	9.1%	11.1%	10.6%	11.6%	31.8%	28.6%	30.1%	28.6%	34.5%	29.2%	28.0%	29.6%
伏見区	12.2%	9.7%	12.4%	11.4%	31.1%	26.4%	27.3%	29.9%	32.2%	31.3%	31.0%	31.9%

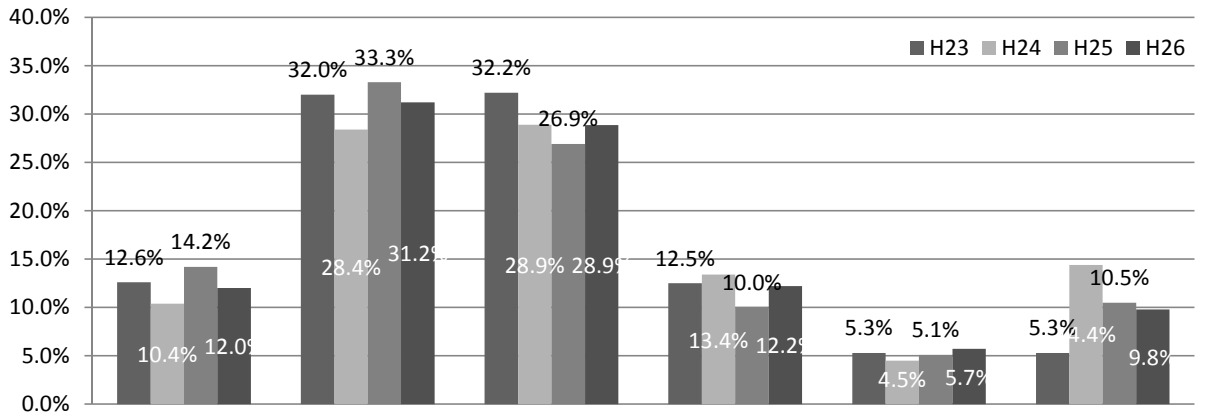
	どちらかというと思わない				そう思わない				無回答			
	H23	H24	H25	H26	H23	H24	H25	H26	H23	H24	H25	H26
市全体	12.3%	12.8%	12.0%	11.7%	6.5%	7.0%	6.0%	6.1%	6.3%	11.0%	10.7%	9.6%
北区	12.3%	13.7%	12.0%	13.5%	8.9%	9.8%	5.3%	7.0%	2.7%	9.7%	10.1%	8.0%
上京区	10.9%	12.5%	10.8%	12.5%	6.4%	5.7%	4.2%	8.6%	4.6%	10.9%	12.4%	5.9%
左京区	11.6%	11.6%	12.0%	11.9%	4.8%	6.3%	5.7%	7.4%	6.7%	11.5%	10.3%	8.4%
中京区	11.0%	11.5%	12.0%	9.8%	5.9%	3.7%	8.7%	5.4%	6.4%	11.1%	8.6%	9.4%
東山区	16.1%	13.6%	9.9%	8.2%	7.3%	8.0%	6.5%	6.0%	7.4%	9.2%	11.8%	10.3%
山科区	11.3%	13.1%	11.9%	11.3%	4.3%	8.9%	5.3%	6.3%	6.6%	10.0%	11.8%	9.4%
下京区	12.5%	13.4%	10.0%	12.2%	5.3%	4.5%	5.1%	5.7%	5.3%	14.4%	10.5%	9.8%
南区	12.6%	11.0%	12.2%	12.0%	7.9%	7.4%	6.6%	5.6%	6.6%	7.1%	13.5%	7.7%
右京区	13.9%	13.6%	11.7%	12.0%	7.3%	5.7%	5.9%	5.9%	4.3%	11.0%	7.8%	10.9%
西京区	11.5%	13.2%	13.7%	12.0%	5.8%	6.1%	5.7%	6.3%	7.3%	11.8%	11.9%	11.7%
伏見区	11.7%	12.8%	13.0%	11.7%	6.2%	7.9%	6.8%	5.1%	6.6%	12.0%	9.6%	9.9%

(2) 回答の変化(H23~H26の比較)

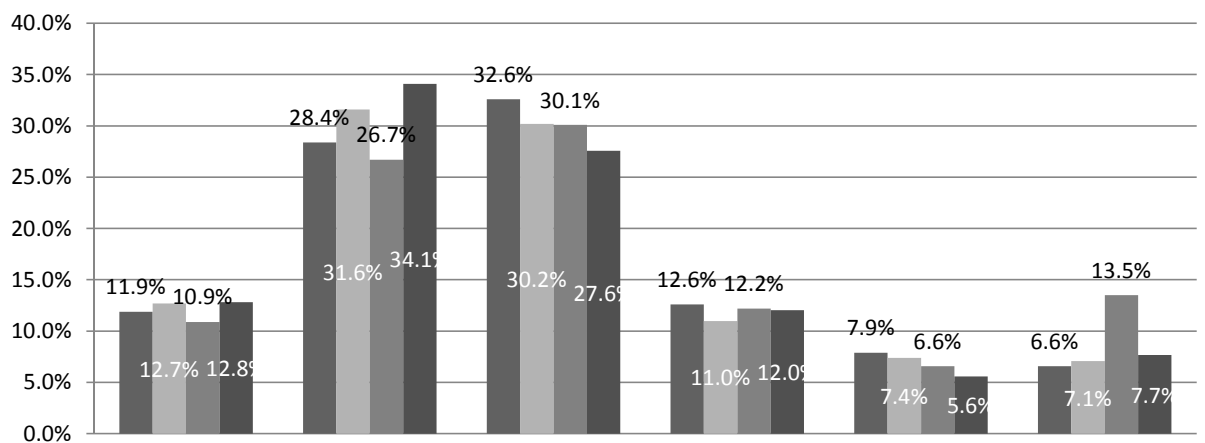




・下京区



・南区



・右京区

